



## Large Product Heat Treatment Furnace (Clam Furnace)

E2SL completed a project for a leading metal component manufacturer in the UK which included the turnkey supply of a large clam type heat treatment furnace for extruded pipe.

### → Aim

After extrusion, large pipes destined for use in the power generation industry require heat treating to relieve stresses created during forming, and to produce the required metallurgical properties. To ensure the high quality required for this application, the temperature distribution within any furnace used for this process has to be extremely uniform.

Using the concept of a working envelope within the furnace, the required temperature uniformity for this unit was required to be +/-10°C at operating temperatures between 600°C and 1150°C.

Given that the life of the furnace is expected to be long, fuel efficiency was also considered important, in order to minimise operation costs. Consequently, heat recuperation technology and low thermal mass principles were incorporated into the design of the unit.

### → Scope of Work

A full turnkey furnace supply package was provided, namely:

- Mechanical, electrical and control design
- Manufacture and procurement of system elements
- Project management
- Site installation
- Commissioning and temperature uniformity trials

### → Benefits

A reliable, energy efficient and temperature uniformity compliant heat treatment facility for forged aerospace components was provided, helping the company to maintain cost effective and competitive operations in this market sector.

The energy consumption of this furnace in production was some 70% lower than that of the furnace it replaced, which far exceeded expectations.

Please visit our website [www.e2sl.co.uk](http://www.e2sl.co.uk)



ISO9001:2008  
GB00724

198470



Energy House, The Stonerow Way, Parkgate, Rotherham, South Yorkshire, S60 1SG, UK  
**Telephone: +44 (0) 1709 521144 | Fax: +44 (0) 1709 529631**  
**Email: [enquiries@e2sl.co.uk](mailto:enquiries@e2sl.co.uk) | Web: [www.e2sl.co.uk](http://www.e2sl.co.uk)**  
Company Registration Number: 4369924, VAT Number: GB 796627175



→ Images



Fig.1 Clam furnace opening (15°)



Fig. 2 Clam furnace opening (60°)

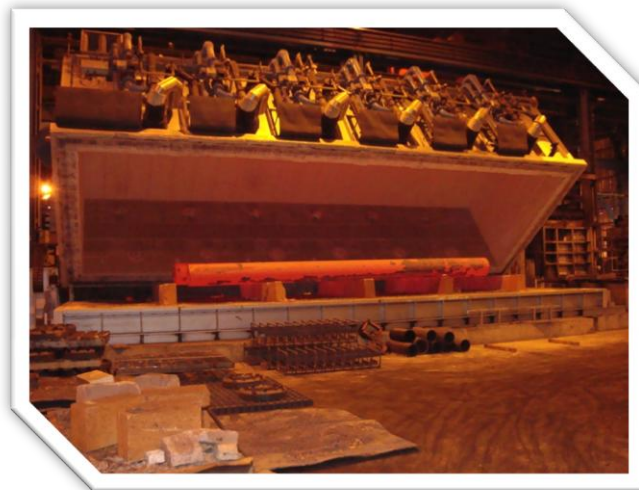


Fig. 3 Clam furnace opening showing product

Please visit our website [www.e2sl.co.uk](http://www.e2sl.co.uk)



ISO9001:2008  
GB00724



198470



Energy House, The Stonerow Way, Parkgate, Rotherham, South Yorkshire, S60 1SG, UK  
**Telephone:** +44 (0) 1709 521144 | **Fax:** +44 (0) 1709 529631  
**Email:** [enquiries@e2sl.co.uk](mailto:enquiries@e2sl.co.uk) | **Web:** [www.e2sl.co.uk](http://www.e2sl.co.uk)  
Company Registration Number: 4369924, VAT Number: GB 796627175